

2023 annual report to the Community

Athelstone School

Athelstone School number: 419

Partnership: Campbell

School principal:

Kirsty Brumby

Date of endorsement:

03/04/2024



Government
of South Australia
Department for Education

Context Statement

Athelstone School caters for students from R-6. At the time of this report, the enrolment in 2023 is 372. Athelstone School is classified as Category 7 on the Department for Education Index of Educational Disadvantage. At the time of this report, the school population includes 1% Aboriginal students, 2% students with disabilities, 13% students with English as an additional language or dialect (EALD) funded background, 1% children/young people in care. Further information about the school is available on the school's website (including its context statement), as well as the My School website.

Governing Council Report

Dear School Community, As we embark on the new goals and challenges for 2024, I thought it would be fitting to share with you some of the activities and achievements of the Governing Council (GC) during 2023. Post restrictions, GC's main goal this year was to enhance community inclusion and involvement. This year, our amazing GC volunteers have:

- Approved a \$5000 spend on new learning and play materials at OSHC for students who use the facilities
- Supported the Scholastic book catalogue drive, leading to +\$3000 invested back into the school library for resources
- Collaborated with the Rotary Club of Morialta, with support from the City of Campbelltown, to create a Little Library. The library will be completed and installed in early 2024
- Facilitated the installation of a Peace Pole by Rotary of Campbelltown, launched on International Peace Day, to create a place for students to reflect on the school grounds
- Commissioned artist Jack Fran to complete three panels to beautify the Gorge Building. The artworks feature native animals and plants of the Adelaide plains and provide a pop of colour to greet our youngest students each morning
- Investigated options and quotes for installing new school hall flooring, to benefit students in PE and after-school sporting activities. It is anticipated this work will be carried out in 2024
- Supported the Robotica Programs, and the continuation of competitions and support for participating students
- Participated in the new parent morning tea programs, introduced by leadership to connect school and parent community
- Facilitated Mother's Day and Father's Day stalls to raise funds for the school
- Applied for a Parents in Education grant to assist us in establishing an ongoing local parent engagement framework
- Participated in policy review and the External School Review
- Parents and Friends committee went above and beyond to support the school disco and deliver the parents-only social Quiz Night, which was a highlight of the year. These events required a great deal of planning, organising and have helped us build connections within the school and local community

In Term 3 We farewelled our Principal Gyllian Godfrey and Assistant Principal David De Boer for internal promotions within the Department for Education, we thank them both for their leadership roles and impact they have given our students and relationships with the community.

Our new leader Kirsty Brumby has shown great strength in her leadership role. Since beginning in Term 4, she has worked hard to create connections with both students and staff. Her vision of creating a strong leadership team of Kate, Dave, and herself will enable the continued holistic growth of our students and teachers.

Kirsty's focus on considering future stretch and healthy challenge will see the students continue to grow in their learning journey at Athelstone School. The GC will continue to work closely with Kirsty and the Leadership team, and we are optimistic about what will be achieved in 2024.

Our wonderful Athelstone teaching staff, your commitment and support to our students is appreciated on all levels as the focus on teaching children not subjects is shown in all year levels. Thank you for all you do!

Lastly...Thank you to our wonderful GC - we are all volunteers who give our time to make a difference for our school. The time and effort you have invested this year has not gone unnoticed! I thank parents Jess, Vanessa, Stacey, Jenah, Alex, Tara, Alison, Claire and Josie, teachers Arrielle and Beth and Donna and Kirsty for their commitment and enthusiasm this year. We may be small in number, but we have worked together to achieve a lot. We welcome anyone interested in improving and growing Athelstone School to consider joining us on GC, or volunteering on a committee or in the classroom. If you are interested in learning more about the work of the GC, and perhaps joining us in 2024 please contact us at governingcouncil@athelstone.net or speak to a GC member directly.

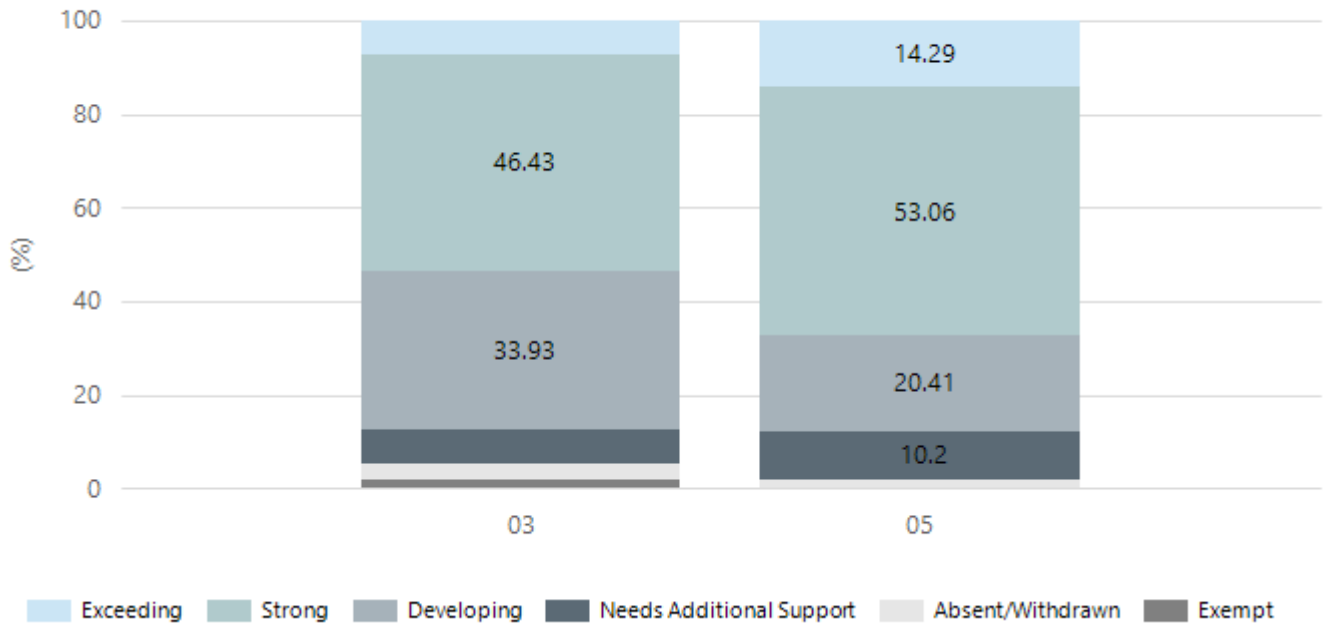
Alex Manifold
Chairperson
Governing Council 2023

Performance Summary

NAPLAN Proficiency

In 2023, the Australian Curriculum, Assessment and Reporting Authority (ACARA) - a Commonwealth Independent statutory authority - announced changes to NAPLAN performance reporting. This new way of reporting by ACARA that NAPLAN results from 2023 will not be comparable to previous years. The new approach replaces the previous numerical NAPLAN bands and the national minimum standard.

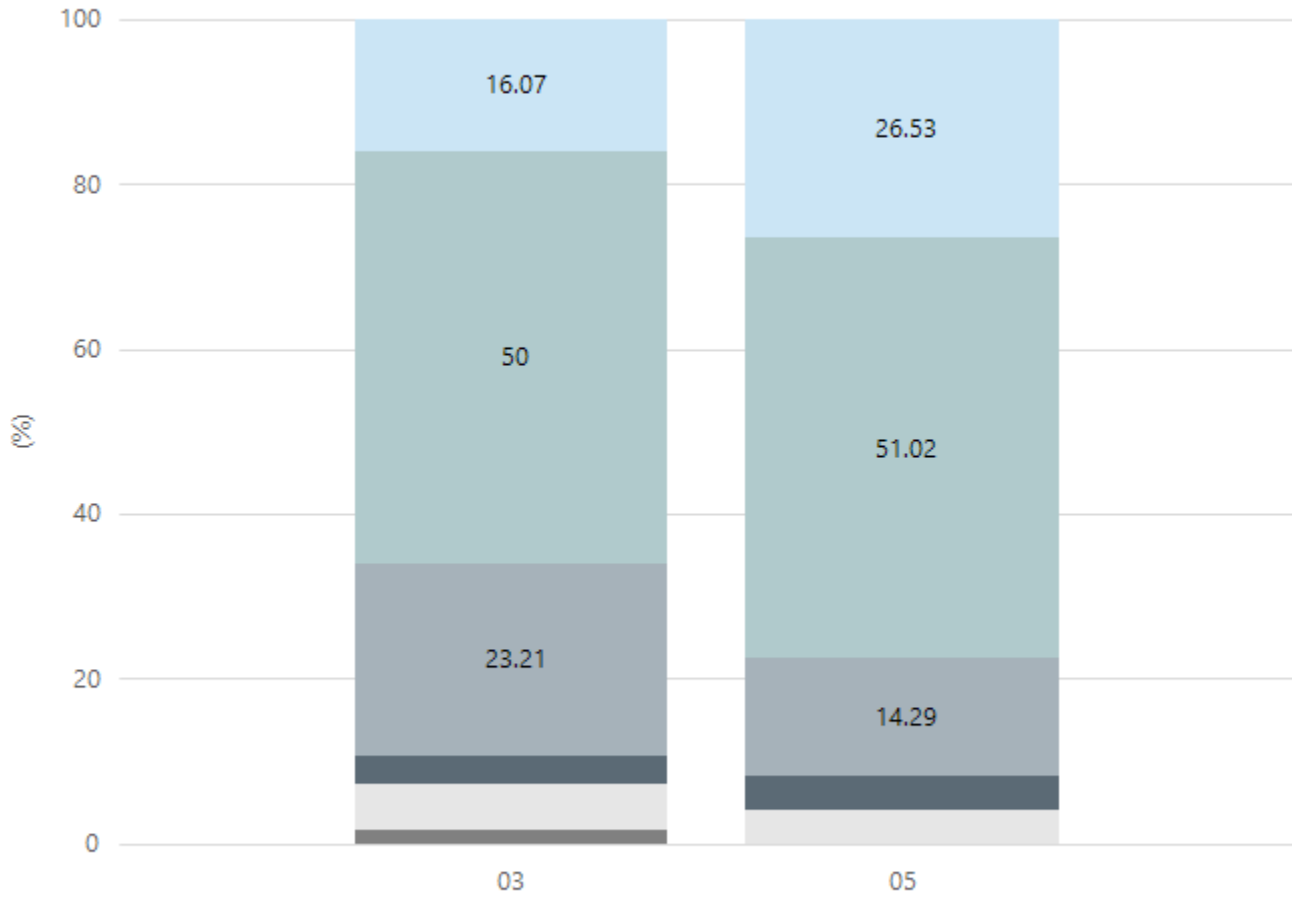
Numeracy



Year Level	03	05
Exceeding	4	7
Strong	26	26
Developing	19	10
Needs Additional Support	4	5
Absent/Withdrawn	2	1
Exempt	1	
Total	56	49

Data Source: Department for Education Assessment Data Holdings, 2023. When there are less than six students in a cohort, no data is supplied.

Reading

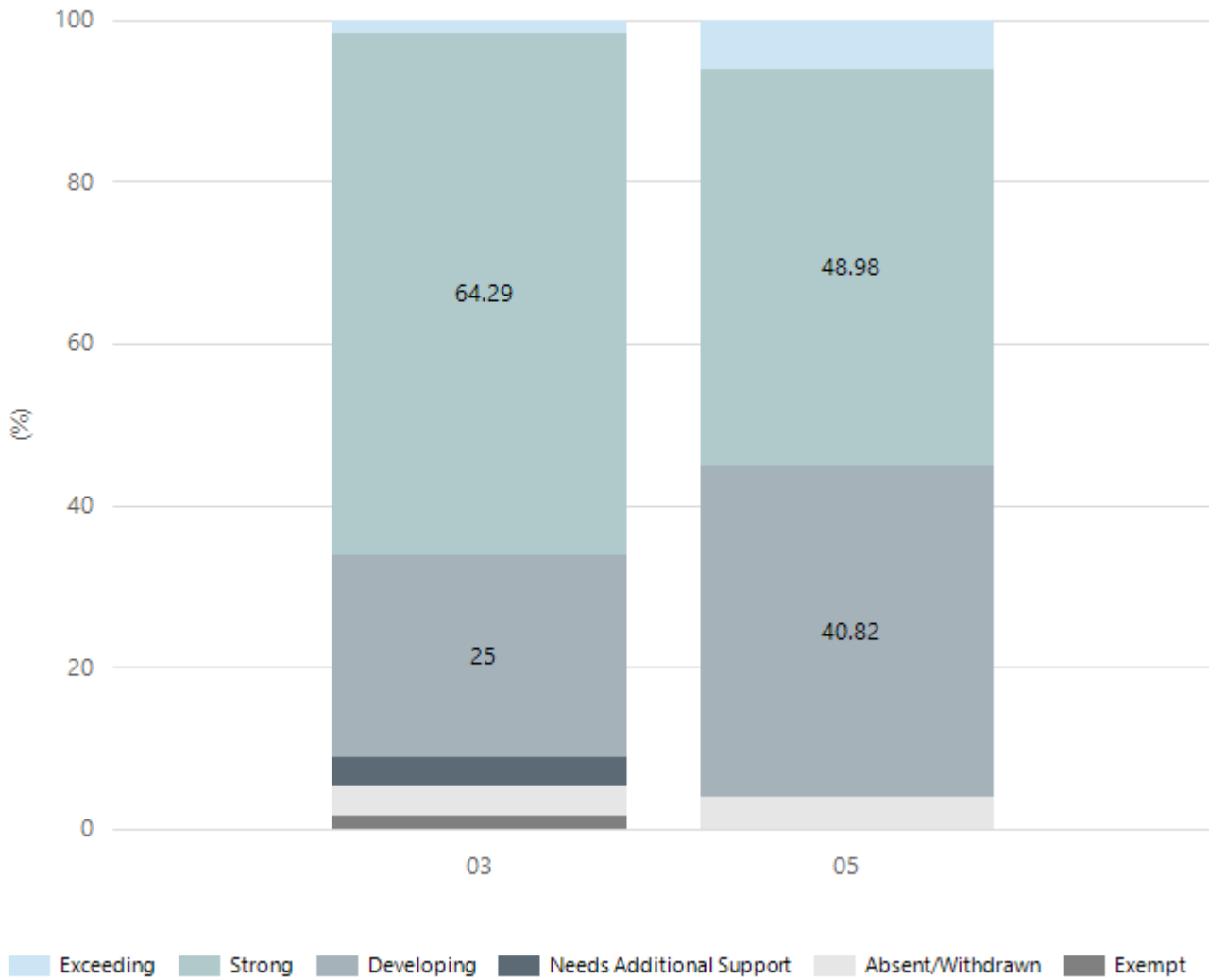


■ Exceeding
 ■ Strong
 ■ Developing
 ■ Needs Additional Support
 ■ Absent/Withdrawn
 ■ Exempt

Year Level	03	05
Exceeding	9	13
Strong	28	25
Developing	13	7
Needs Additional Support	2	2
Absent/Withdrawn	3	2
Exempt	1	
Total	56	49

Data Source: Department for Education Assessment Data Holdings, 2023. When there are less than six students in a cohort, no data is supplied.

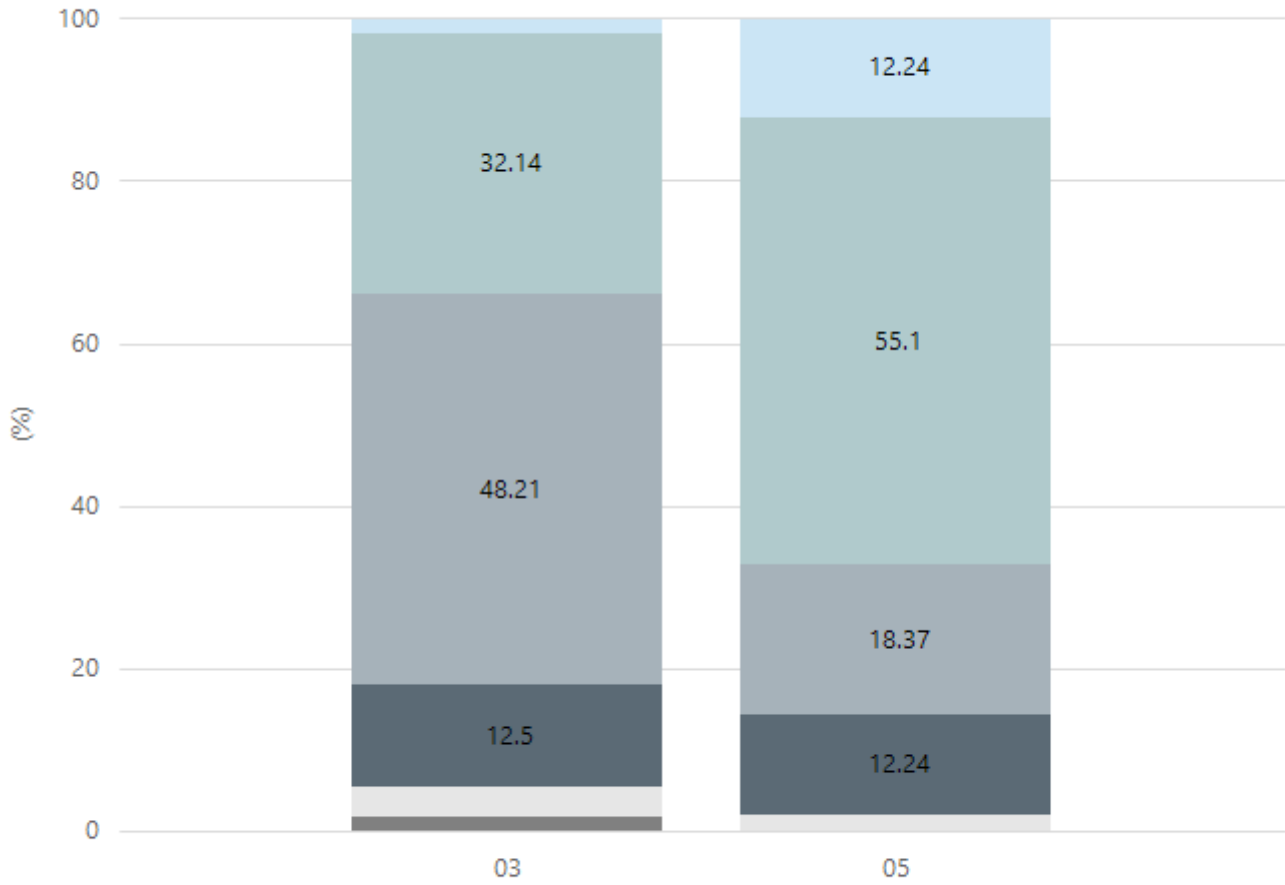
Writing



Year Level	03	05
Exceeding	1	3
Strong	36	24
Developing	14	20
Needs Additional Support	2	
Absent/Withdrawn	2	2
Exempt	1	
Total	56	49

Data Source: Department for Education Assessment Data Holdings, 2023. When there are less than six students in a cohort, no data is supplied.

Grammar

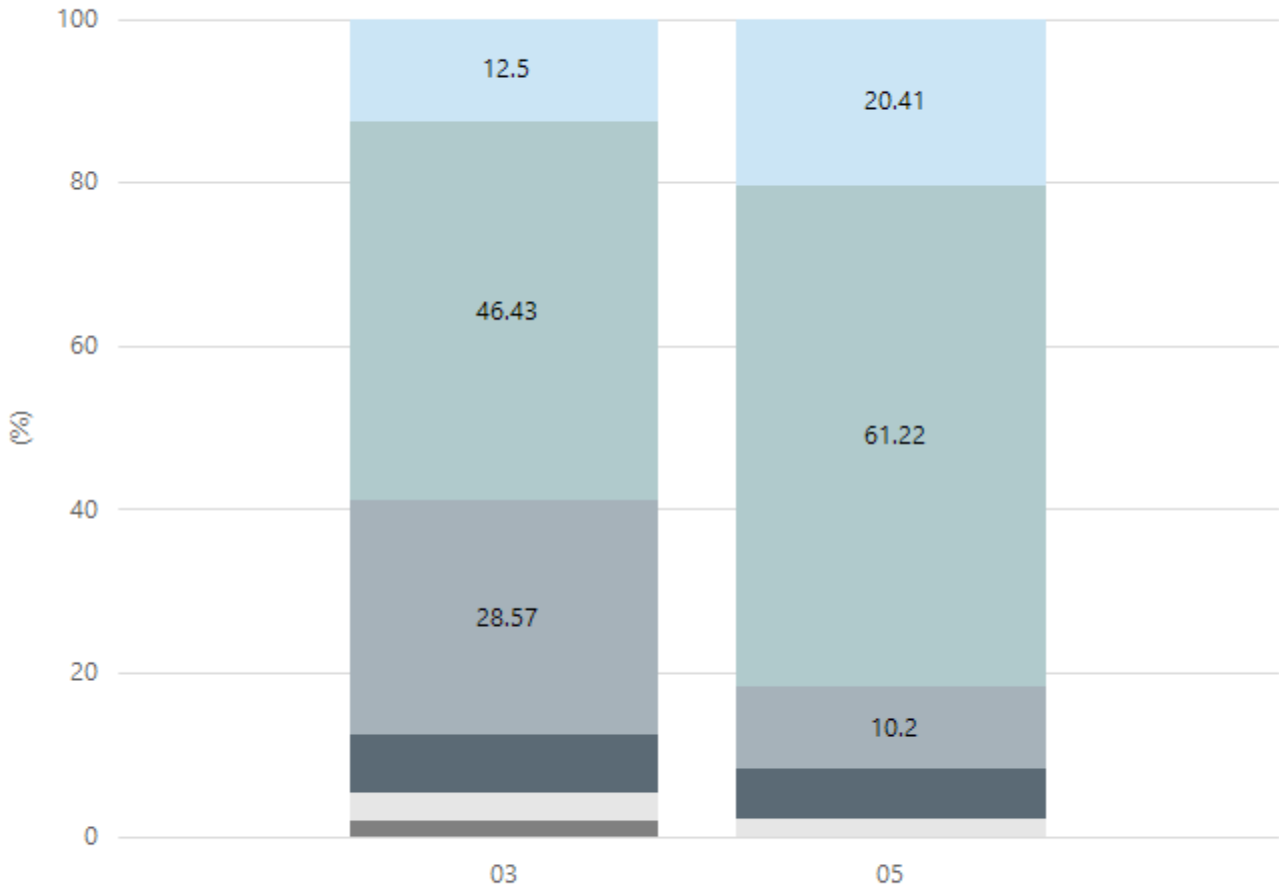


Exceeding Strong Developing Needs Additional Support Absent/Withdrawn Exempt

Year Level	03	05
Exceeding	1	6
Strong	18	27
Developing	27	9
Needs Additional Support	7	6
Absent/Withdrawn	2	1
Exempt	1	
Total	56	49

Data Source: Department for Education Assessment Data Holdings, 2023. When there are less than six students in a cohort, no data is supplied.

Spelling



Exceeding Strong Developing Needs Additional Support Absent/Withdrawn Exempt

Year Level	03	05
Exceeding	7	10
Strong	26	30
Developing	16	5
Needs Additional Support	4	3
Absent/Withdrawn	2	1
Exempt	1	
Total	56	49

Data Source: Department for Education Assessment Data Holdings, 2023. When there are less than six students in a cohort, no data is supplied.

School Attendance

Year Level	2021	2022	2023
Reception	95.5%	89.6%	88.4%
Year 01	96.1%	91.4%	92.6%
Year 02	94.3%	91.3%	92.3%
Year 03	94.2%	92.0%	93.0%
Year 04	94.8%	89.6%	92.8%
Year 05	94.9%	91.0%	90.7%
Year 06	92.6%	89.0%	91.9%
Year 07	93.5%		
Total	94.5%	90.6%	91.8%

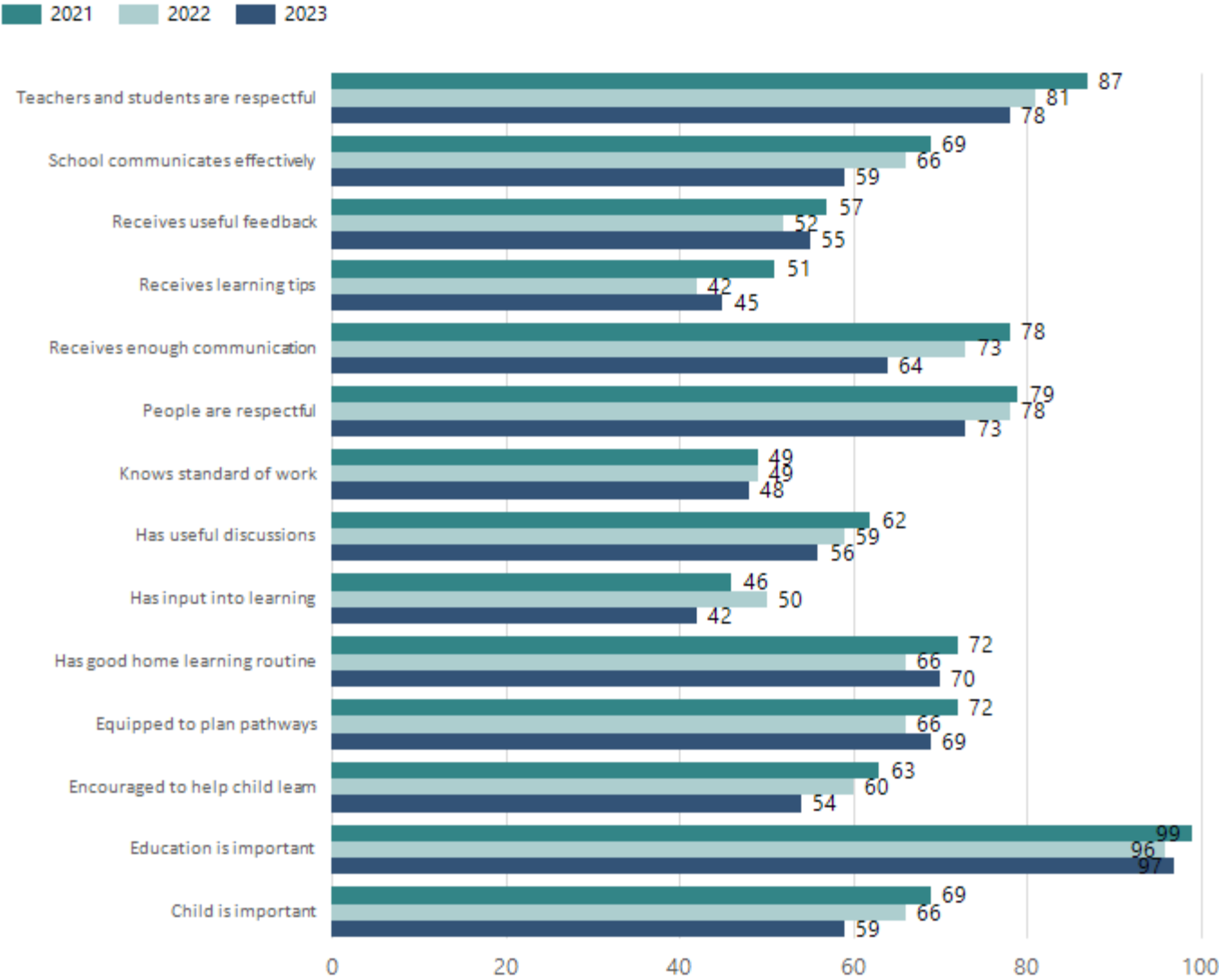
Data Source: Department for Education Attendance Data, Semester 1 Report 2023. A blank cell indicates there were no students enrolled. 'Primary Other' includes students enrolled in specialised education options. 'Secondary Other' includes students who have already spent a year at Year 12 and elected to undertake further study at Year 12.

Attendance Comment

In South Australia, all children and young people must be in school from 6 years to 16 years old. They must attend a government or non-government school full time. From age 16 to 17 however, young people must attend school or an approved learning program (such as an apprenticeship, traineeship, accredited course or university). Schools and parents must encourage and support students to come to school every day. Parents and caregivers must make sure their child is enrolled in a school, and attends school all day and everyday it is open, unless a child is sick or has an approved exemption. Teachers and leaders actively follow up when a student misses school, including recording all absences and non-attendance. All schools in South Australia have local attendance procedures governed under the Education and Children's Services Regulations 2020.

Parent Opinion Survey Results

Proportion of agree/strongly agree response(%)



Data Source: 2023 Department for Education Parent Opinions Survey, Term 3 2023.

Intended Destination

Leave Reason	Number	%
NG - ATTENDING NON-GOV SCHOOL IN SA	3	27.0%
OV - LEFT SA FOR OVERSEAS	1	9.0%
TG - TRANSFERRED TO SA GOVERNMENT SCHOOL	7	64.0%

Data Source: Department for Education Destination Data Report, 2023. Data extract term 3 2023. Data shows recorded destinations for students that left the school in the previous year. Data is uploaded by schools in term 3 and may not reflect final or total figures at time of report creation.

Highest Qualifications held by the teaching workforce and workforce composition

All teachers at this school are qualified and registered with the SA Teachers Registration Board.

Qualification Level	Number of Qualifications
Bachelor's degrees or Diplomas	21
Postgraduate Qualifications	6

Data Source: Data extracted from Mandatory Workforce Information Collections as on the last pay date of June 2023. As self-reported by staff in the system.

Please note: Data includes staff who are Actively employed and on extended paid leave. Please note only the highest qualification of the Teaching staff is reported. Excludes any number of other certifications earned.

Workforce composition including indigenous staff

	Teaching Staff		Non-Teaching Staff	
	Indigenous	Non-Indigenous	Indigenous	Non-Indigenous
Full-Time Equivalent	0.0	23.4	0.0	7.3
Persons	0.0	27.0	0.0	11.0

Data Source: Data extracted from Mandatory Workforce Information Collection as on the last pay date of June 2023.

Please note: Data includes staff who are actively employed and on extended paid leave. "Indigenous category" is self-reported by staff in the system.

Financial Statement

Funding Source	Amount
Grants: State	\$3,704,828
Grants: Commonwealth	\$5400
Parent Contributions	\$194,812
Fund Raising	\$5,660
Other	\$26,185

Data Source: School supplied data.